

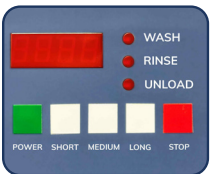
# 1536-SPW SCALE PARTS WASHER

## WHEN FOOD SAFETY AND EFFICIENCY COUNT

Developed in cooperation with manufacturers of multi-head weighers, the Douglas Model 1536-SPW is designed to quickly and efficiently wash, rinse, and sanitize weigh hoppers, chutes, and feeder pans. The machine features two stainless steel tanks that can be heated with electric, gas, or steam booster heaters. One tank is used to recirculate wash water and the other is for dispensing sanitizing rinse water.

Wash times are pre-programmed at 4, 6, or 8 minutes. Regardless of the wash cycle selected, each is followed by a 30-second sanitizing rinse and a 60-second steam exhaust cycle. Using the shortest wash time, the machine can process up to 10 batches an hour. At this maximum rate of operation, the 1536-SPW will use just 120 gallons of water per hour.

Specialized Wash Racks are available for all types and sizes of scales and are designed to protect the parts during cleaning and extend their lifetime. Change-over time is significantly reduced because the hoppers and feeder pans of most 12-head scales can be cleaned in just one batch. Like all Douglas Systems, this machine will help you meet today's high standard for cleanliness and sanitation while saving you time, labor, water, and energy.



DIGITAL CONTROL & INFORMATION CENTER



PRECISION ENGINEERED SPRAY ARM ASSEMBLY



OPTIONAL FOLD-AWAY RAMP SYSTEM



OPTIONAL STEAM EXTRACTION FAN



EXTERNAL WASH-DOWN HOSE & SPRAY GUN



STANDARD & CUSTOM DESIGNED WASH RACKS

## STANDARD FEATURES:

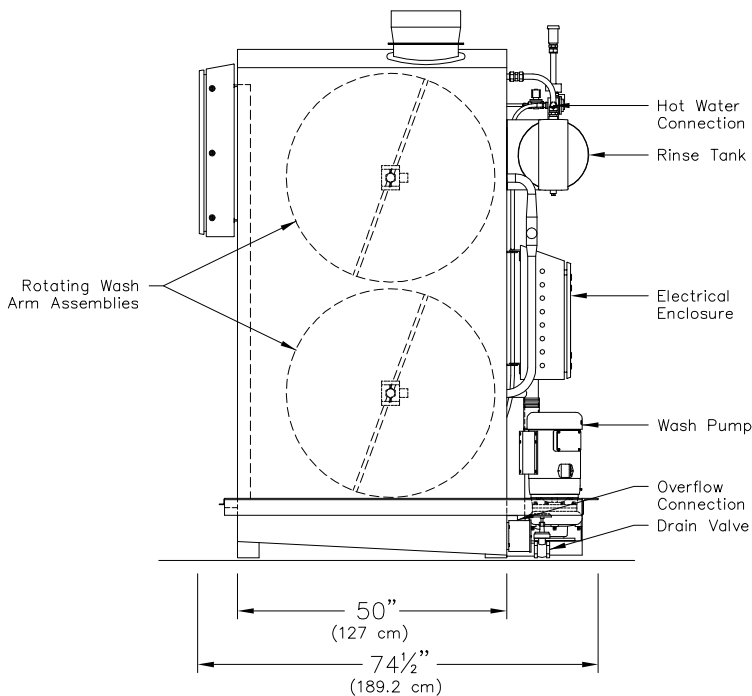
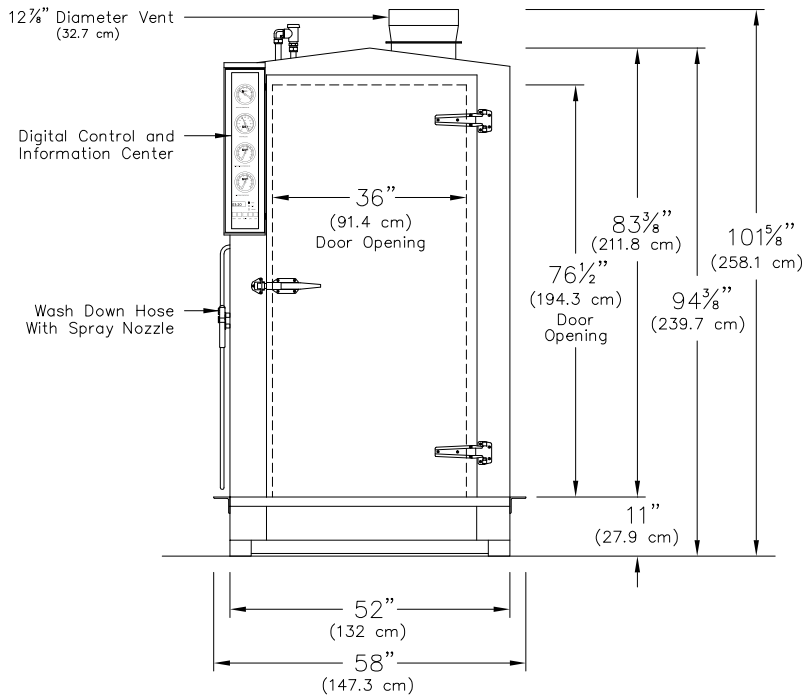
- Rugged Stainless Steel Construction
- Sanitary, Sloped Root Design
- Rear-Mounted 15 H.P. Wash Pump
- Recirculating Wash Tank
- Separate, Sanitizing Rinse Tank
- Automatic Water Level Controls
- Pre-Programmed Digital Control and Information Center
- Processes Up to 10 Batches an Hour
- Wash & Rinse Temperature and Pressure Gauges
- Self-Contained Water Heating
- Standard and Custom Wash Racks
- External Rinse Hose and Spray Gun
- Easy to Clean Filtration System
- Rotating Wash Arms Fitted with V-Jets
- Designed for Mezzanine, Pit or Ramp Installations
- One Year Warranty Program



**DOUGLAS**  
WASHING AND SANITIZING SYSTEMS

# 1536-SPW SCALE PARTS WASHER

Machines are built to order. We offer a variety of options and upgrades to suit the needs of different industries or to meet personal design preferences. Detailed Installation Drawings, specific to heat type and selected options, are provided at the time of order placement. These are General Arrangement drawings for reference only. **Please consult with a Sales Engineer about your specific application.**



## ABBREVIATED SPECIFICATIONS

### DOOR

Double skinned, Stainless steel, hinged door design with an exterior latch and inside release handle. Available with a left or right-hand door swing.

### SPRAY ARM ASSEMBLY

Stainless steel spray arm assemblies, with Stainless steel jets and quick-release mechanism for easy cleaning and reassembly.

### FILTER

Perforated, stainless steel, basket type.

### WATER PUMP

15 H.P., 208 / 240 / 480 or optional 575 volt with output of 250 gallons per minute at 35 to 45 P.S.I.

### DIGITAL CONTROL & INFORMATION CENTER

Push pad operation of "power on", "stop" and "short, medium, or long wash cycles". A digital display indicates "time remaining" for each cycle. LEDs indicate wash, rinse, and unload functions. Pre-programmed circuit board allows the push pad to be used as a "diagnostic center" by displaying "error codes" for ease of troubleshooting.

### GAUGES

Special moisture resistant design measures wash temperature, wash pressure, and rinse temperatures.

### WASH TANK

Stainless steel with electric, infrared gas, live steam, or steam coil heating, thermostatically controlled, low-water protected, and sloped to drain with a 76-gallon capacity (67-gallon if infrared gas heated).

### RINSE TANK

Stainless steel with electric immersion heater (infrared gas or steam coil option). Uses 12 gallons per 30-second cycle. 20-gallon capacity.

### WASH RACKS

Stainless steel, built to match specific washing requirements. Supplied with Stainless steel casters and nylon wheels ( fixed front and swiveled rear ).

### UTILITIES

See detailed specification sheet.

### SHIPPING

Crated weight – approximately 2400 lbs.  
Crated size – 103" L x 89" W x 72" H (261.62cm D x 226.06cm W x 182.88cm )

